

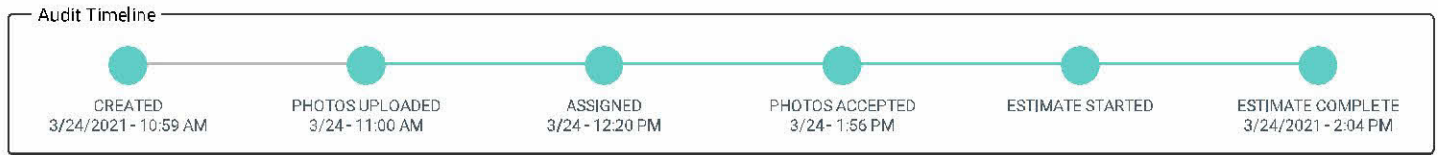


Claim: 013981537406

Photo Estimate Service

Hertz

Atlantic - Philadelphia 01800-92



Review Results

QCS Estimate: \$626.02

Comments:

Assignment

Action: Repair
Type: Type A
Rent Location: 1801

Vehicle

2020 Chevrolet Traverse
VIN: 1GNERHKW0LJ219641
Damage: Front
Days to Repair:

Auditor

Todd Horgan
877-237-3727 ext: 602
todd.horgan@qcsdirect.com

Submitted By

Nicholas Beto
717-203-5564
nicholas.beto@hertz.com

QUALITY CLAIMS SOLUTIONS

7405 S Bitterroot Pl. Suite 100
 Sioux Falls, SD 57108
 Phone: (877) 237-3727, FAX:(866) 371-2844
 qcs@qcsdirect.com

Workfile ID: e8723461

For:

QUALITY CLAIMS SOLUTIONS

Atlantic - Philadelphia 01800-92

Estimate of Record

Owner: Hertz, Nicholas Beto

Job Number:

Written By: TODD HORGAN

Insured: Hertz, Nicholas Beto
 Type of Loss: Collision
 Point of Impact: 12 Front

Policy #:
 Date of Loss: 3/24/2021 1:00 PM

Claim #: 013981537406
 Days to Repair: 3

Owner:
 Hertz, Nicholas Beto
 19104

Inspection Location:
 MAACO PHILADELPHIA
 5091 UMBRIA STREET
 PHILADELPHIA, PA 19128
 Repair Facility
 (267) 297-7034 Business

Repair Facility:
 MAACO PHILADELPHIA
 5091 UMBRIA STREET
 PHILADELPHIA, PA 19128
 (267) 297-7034 Business

VEHICLE

2020 CHEV Traverse LT FWD w/Leather 4D UTV 6-3.6L Gasoline Direct Injection Black

VIN: 1GNERHKW0LJ219641
 License: NFR-T51
 State: FL

Production Date:
 Odometer: 18,290
 Condition: Excellent

Interior Color: Black
 Exterior Color: Black

TRANSMISSION

Automatic Transmission

POWER

Power Steering
 Power Brakes
 Power Windows
 Power Locks
 Power Mirrors
 Heated Mirrors
 Power Driver Seat
 Power Passenger Seat

DECOR

Dual Mirrors
 Body Side Moldings
 Privacy Glass

Intermittent Wipers

Tilt Wheel

Cruise Control

Rear Defogger

Keyless Entry

Alarm

Message Center

Steering Wheel Touch Controls

Rear Window Wiper

Climate Control

Dual Air Condition

Backup Camera

Parking Sensors

Remote Starter

Home Link

Stereo

Search/Seek

Auxiliary Audio Connection

Satellite Radio

SAFETY

Drivers Side Air Bag

Passenger Air Bag

Anti-Lock Brakes (4)

4 Wheel Disc Brakes

Traction Control

Stability Control

Front Side Impact Air Bags

Head/Curtain Air Bags

Communications System

Hands Free Device

ROOF

Luggage/Roof Rack

SEATS

Bucket Seats

Leather Seats

Heated Seats

3rd Row Seat

WHEELS

Aluminum/Alloy Wheels

PAINT

Clear Coat Paint

OTHER

Fog Lamps

Signal Integrated Mirrors

TRUCK

Estimate of Record

Owner: Hertz, Nicholas Beto

Job Number:

2020 CHEV Traverse LT FWD w/Leather 4D UTV 6-3.6L Gasoline Direct Injection Black

Console/Storage

RADIO

Xenon or L.E.D. Headlamps

Power Trunk/Liftgate

CONVENIENCE

AM Radio

Blind Spot Detection

Air Conditioning

FM Radio

Lane Departure Warning

Estimate of Record

Owner: Hertz, Nicholas Beto

Job Number:

2020 CHEV Traverse LT FWD w/Leather 4D UTV 6-3.6L Gasoline Direct Injection Black

Line	Oper	Description	Part Number	Qty	Extended Price \$	Labor	Paint
1		FRONT BUMPER & GRILLE					
2	*	Rpr Bumper cover				3.0	3.0
3	*	Add for Clear Coat					0.9
4		O/H bumper assy				3.5	
5	Repl	RT Fog lamp bezel	23234811	1	82.75	Incl.	
6	Repl	RT Insert w/fog lamps	84294631	1	105.88	Incl.	
7	R&I	Grille assy bright chrome LT				Incl.	
8	R&I	Lower grille				Incl.	
9		FRONT LAMPS					
10	R&I	RT Headlamp assy from 04/2019				0.3	
11	*	Rpr RT Headlamp assy from 04/2019				1.0	
		Note: Polish yellow paint off of lens					
12	R&I	LT Headlamp assy from 04/2019				0.3	
13		MISCELLANEOUS OPERATIONS					
14	*	Repl Cover car/bag		1		0.0	
15	#	Hazardous Waste		1	3.00 X		
SUBTOTALS					191.63	8.1	3.9

ESTIMATE TOTALS

Category	Basis	Rate	Cost \$
Parts			188.63
Parts Discount	\$ 188.63	-15.0 %	-28.29
Body Labor	8.1 hrs @	\$ 31.00 /hr	251.10
Paint Labor	3.9 hrs @	\$ 31.00 /hr	120.90
Paint Supplies	3.9 hrs @	\$ 23.25 /hr	90.68
Miscellaneous			3.00
Subtotal			626.02
Total Cost of Repairs			626.02
Deductible			0.00
Total Adjustments			0.00
Net Cost of Repairs			626.02

MyPriceLink Estimate ID / Quote ID:

804047746611814400 / 83286925

Owner: Hertz, Nicholas Beto

Job Number:

2020 CHEV Traverse LT FWD w/Leather 4D UTV 6-3.6L Gasoline Direct Injection Black

ANY PERSON WHO KNOWINGLY AND WITH INTENT TO DEFRAUD ANY INSURANCE COMPANY OR OTHER PERSON FILES AN APPLICATION FOR INSURANCE OR STATEMENT OF CLAIM CONTAINING ANY MATERIALLY FALSE INFORMATION OR CONCEALS FOR THE PURPOSE OF MISLEADING, INFORMATION CONCERNING ANY FACT MATERIAL THERETO COMMITS A FRAUDULENT INSURANCE ACT, WHICH IS A CRIME AND SUBJECTS THE PERSON TO CRIMINAL AND CIVIL PENALTIES.

THE FOLLOWING IS A LIST OF ABBREVIATIONS OR SYMBOLS THAT MAY BE USED TO DESCRIBE WORK TO BE DONE OR PARTS TO BE REPAIRED OR REPLACED: D=DISCONTINUED PART A=APPROXIMATE PRICE B=BODY LABOR D=DIAGNOSTIC E=ELECTRICAL F=FRAME G=GLASS M=MECHANICAL P=PAINT LABOR S=STRUCTURAL T=TAXED MISCELLANEOUS X=NON TAXED MISCELLANEOUS ADJ=ADJACENT ALGN=ALIGN A/M=AFTERMARKET BLND=BLEND CAPA=CERTIFIED AUTOMOTIVE PARTS ASSOCIATION D&R=DISCONNECT AND RECONNECT EST=ESTIMATE EXT. PRICE=UNIT PRICE MULTIPLIED BY THE QUANTITY INCL=INCLUDED MISC=MISCELLANEOUS NON-ADJ=NON ADJACENT O/H=OVERHAUL OP=OPERATION NO=LINE NUMBER QTY=QUANTITY RECOND=RECONDITION REFN=REFINISH REPL=REPLACE R&I=REMOVE AND INSTALL R&R=REMOVE AND REPLACE RPR=REPAIR RT=RIGHT SECT=SECTION SUBL=SUBLET LT=LEFT W/O=WITHOUT W/_=WITH/_ #=MANUAL LINE ENTRY *=OTHER [IE..MOTORS DATABASE INFORMATION WAS CHANGED]. **=DATABASE LINE WITH AFTERMARKET N=NOTES ATTACHED TO LINE NAGS=NATIONAL AUTO GLASS SPECIFICATIONS. OPT OEM=ORIGINAL EQUIPMENT MANUFACTURER PARTS EITHER OPTIONALLY SOURCED OR OTHERWISE PROVIDED WITH SOME UNIQUE PRICING OR DISCOUNT.

THE ATTACHED ESTIMATE REPRESENTS AN APPRAISAL OF THE COST OF REPAIR FOR THE VISIBLE DAMAGE TO THE VEHICLE NOTED AT THE TIME OF INSPECTION NECESSARY TO RETURN THE VEHICLE TO ITS PREDAMAGED CONDITION. COSTS ABOVE THE APPRAISED AMOUNT MAY BE THE RESPONSIBILITY OF THE VEHICLE OWNER. THERE IS NO REQUIREMENT THAT THE VEHICLE OWNER USE ANY SPECIFIED REPAIR SHOP. INFORMATION REGARDING REPAIR FACILITIES WHICH WILL BE ABLE TO REPAIR THE VEHICLE FOR THE APPRAISED AMOUNT IS AVAILABLE FROM THE INSURANCE COMPANY. IF USED PARTS ARE SPECIFIED, THEY ARE REQUIRED TO BE OF LIKE KIND AND QUALITY TO THOSE BEING REPLACED. INCIDENTAL CHARGES SUCH AS TOWING, PROTECTIVE CARE, CUSTODY, STORAGE, DEPRECIATION, BATTERY AND TIRE REPLACEMENT ARE NOTED WHEN APPLICABLE.

Owner: Hertz, Nicholas Beto

Job Number:

2020 CHEV Traverse LT FWD w/Leather 4D UTV 6-3.6L Gasoline Direct Injection Black

Estimate based on MOTOR CRASH ESTIMATING GUIDE and potentially other third party sources of data. Unless otherwise noted, (a) all items are derived from the Guide DR1GM18, CCC Data Date 03/17/2021, and potentially other third party sources of data; and (b) the parts presented are OEM-parts. OEM parts are manufactured by or for the vehicle's Original Equipment Manufacturer (OEM) according to OEM's specifications for U.S. distribution. OEM parts are available at OE/Vehicle dealerships or the specified supplier. OPT OEM (Optional OEM) or ALT OEM (Alternative OEM) parts are OEM parts that may be provided by or through alternate sources other than the OEM vehicle dealerships with discounted pricing. Asterisk (*) or Double Asterisk (**) indicates that the parts and/or labor data provided by third party sources of data may have been modified or may have come from an alternate data source. Tilde sign (~) items indicate MOTOR Not-Included Labor operations. The symbol (<>) indicates the refinish operation WILL NOT be performed as a separate procedure from the other panels in the estimate. Non-Original Equipment Manufacturer aftermarket parts are described as Non OEM, A/M or NAGS. Used parts are described as LKQ, RCY, or USED. Reconditioned parts are described as Recond. Recored parts are described as Recore. NAGS Part Numbers and Benchmark Prices are provided by National Auto Glass Specifications. Labor operation times listed on the line with the NAGS information are MOTOR suggested labor operation times. NAGS labor operation times are not included. Pound sign (#) items indicate manual entries.

Some 2021 vehicles contain minor changes from the previous year. For those vehicles, prior to receiving updated data from the vehicle manufacturer, labor and parts data from the previous year may be used. The CCC ONE estimator has a list of applicable vehicles. Parts numbers and prices should be confirmed with the local dealership.

The following is a list of additional abbreviations or symbols that may be used to describe work to be done or parts to be repaired or replaced:

SYMBOLS FOLLOWING PART PRICE:

m=MOTOR Mechanical component. s=MOTOR Structural component. T=Miscellaneous Taxed charge category. X=Miscellaneous Non-Taxed charge category.

SYMBOLS FOLLOWING LABOR:

D=Diagnostic labor category. E=Electrical labor category. F=Frame labor category. G=Glass labor category. M=Mechanical labor category. S=Structural labor category. (numbers) 1 through 4=User Defined Labor Categories.

OTHER SYMBOLS AND ABBREVIATIONS:

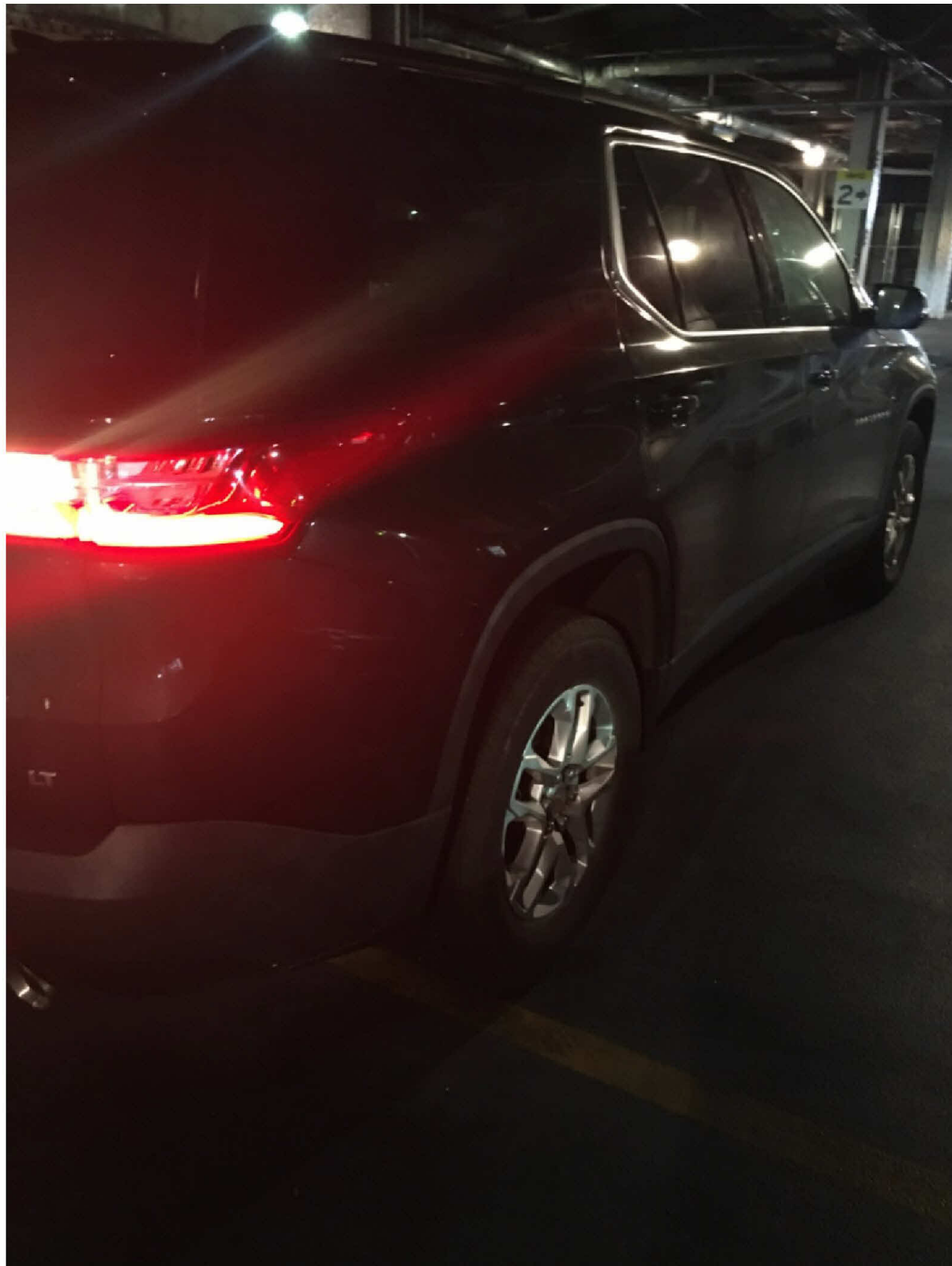
Adj.=Adjacent. Algn.=Align. ALU=Aluminum. A/M=Aftermarket part. Blnd=Blend. BOR=Boron steel. CAPA=Certified Automotive Parts Association. D&R=Disconnect and Reconnect. HSS=High Strength Steel. HYD=Hydroformed Steel. Incl.=Included. LKQ=Like Kind and Quality. LT=Left. MAG=Magnesium. Non-Adj.=Non Adjacent. NSF=NSF International Certified Part. O/H=Overhaul. Qty=Quantity. Refn=Refinish. Repl=Replace. R&I=Remove and Install. R&R=Remove and Replace. Rpr=Repair. RT=Right. SAS=Sandwiched Steel. Sect=Section. Subl=Sublet. UHS=Ultra High Strength Steel. N=Note(s) associated with the estimate line.

CCC ONE Estimating - A product of CCC Information Services Inc.

The following is a list of abbreviations that may be used in CCC ONE Estimating that are not part of the MOTOR CRASH ESTIMATING GUIDE:

BAR=Bureau of Automotive Repair. EPA=Environmental Protection Agency. NHTSA= National Highway Transportation and Safety Administration. PDR=Paintless Dent Repair. VIN=Vehicle Identification Number.





Own Area

01398 0

Veh #

1537406

Lic #

NFRT51

Model

TRAVERSE

Color/YR

BLA 20

Last 9vin

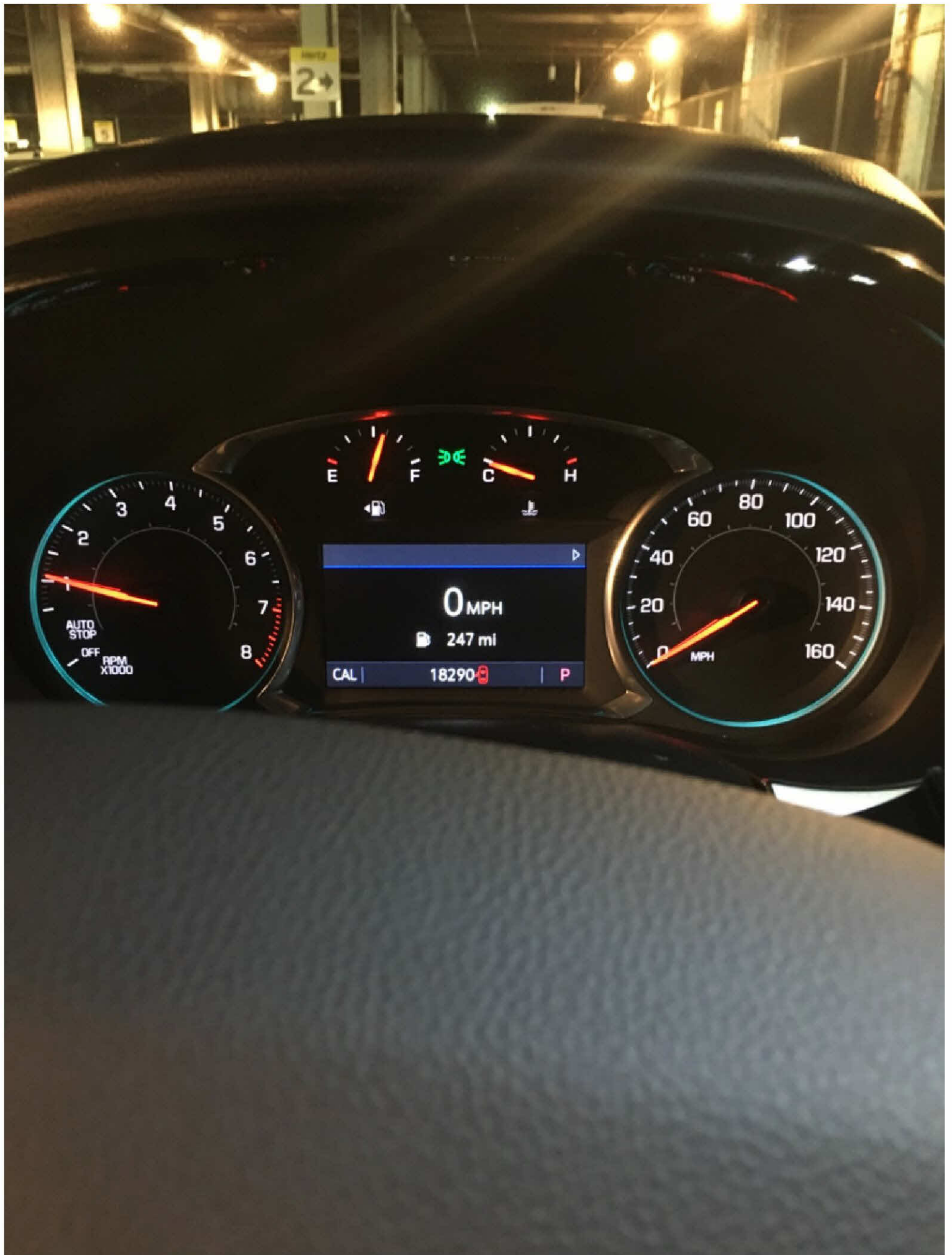
0LJ219641

Class

K6



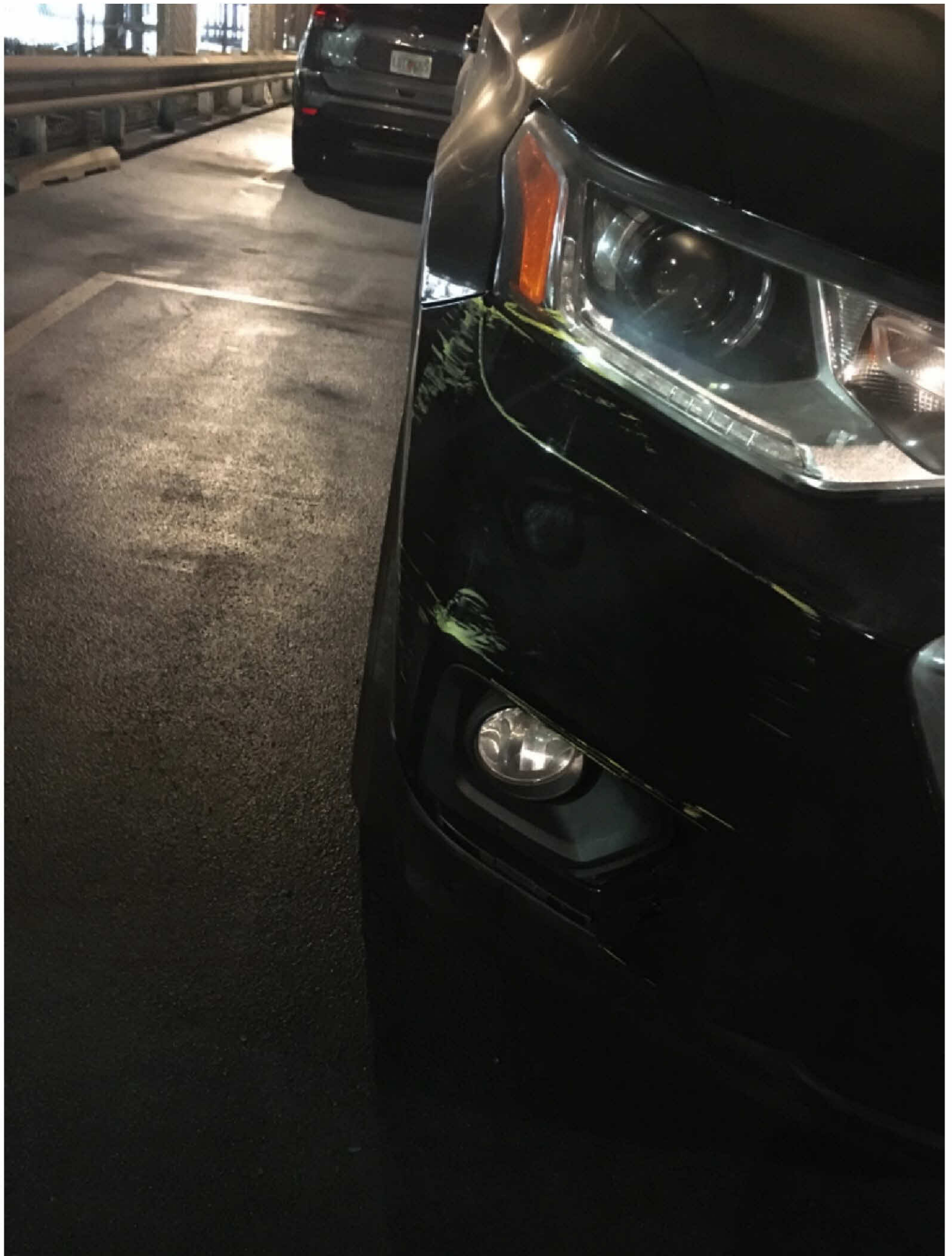














1GNERH1KW0LJ219641

